

CRATE WASHER



This Industrial Crate Washer is made up of solid plates and profiles of stainless steel, with adjustable feet. Access the wash tunnel through upward-folding doors, which will instantly stop operation if opened while in use. Crates are transported through the washer by synthetic chains.

Crates are cleaned in the main wash zone by click nozzles supplied with water by a powerful and energy-efficient pump. The main tank is filled with its own water connection, and is equipped with sensors to detect levels.

After going through the main wash zone, the crates are rinsed with fresh water to remove any remaining detergent. The rinse is controlled by a sensor and the water supply will remain closed if no crates are present.

Features

- Energy efficient
- Easy adjustable click-nozzles
- Stainless steel
- Optional one man operation
- Pre-wash, main and after rinse zones

Options:

Refer to page 4

Part #:

83101125	EKW-1500	(Max. 170 crates per hour)
83101150	EKW-2500*	(Max. 400 crates per hour)
83101350	EKW-3500	(Max. 560 crates per hour)
83101650	EKW-5000	(Max. 800 crates per hour)
83101750	EKW-6000	(Max. 960 crates per hour)
83101850	EKW-7000	(Max. 1120 crates per hour)



800-404-2311

sales@phshygiene.com

1500 Scottsdale Ct, Ste. 100, Elgin, IL 60123

CRATE WASHER



83101125 EKW-1500
(Max. 170 crates per hour)



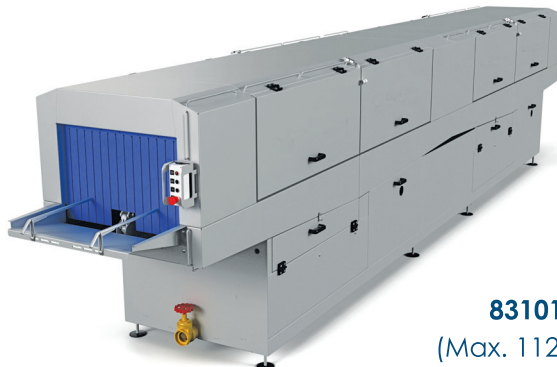
83101350 EKW-3500
(Max. 560 crates per hour)



83101650 EKW-5000
(Max. 800 crates per hour)



83101750 EKW-6000
(Max. 960 crates per hour)



83101850 EKW-7000
(Max. 1120 crates per hour)

EKW + BLOW OFF UNIT EAB CRATE WASHER



A blow off unit can be added to the EKW Crate Washer. This unit dries the crates once they have been washed.

The crates get blown off by stainless steel fans. The intelligent design heats the air (through recirculation) up to approximately 122°F/50°C, which results in the quickest drying process.

Part#:

83101151	EKW-2500 + Blow off unit	(Max. 400 crates per hour)
83101351	EKW-3500 + Blow off unit	(Max. 560 crates per hour)
83101651	EKW-5000 + Blow off unit	(Max. 800 crates per hour)
83101751	EKW-6000 + Blow off unit	(Max. 960 crates per hour)
83101851	EKW-7000* + Blow off unit	(Max. 1120 crates per hour)

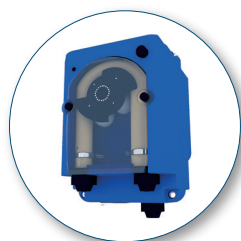
CRATE WASHER OPTIONS

Options / Part #:

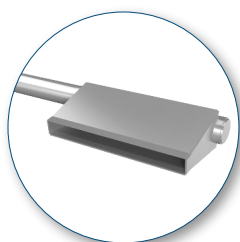
- 83109110** Dosing pump for detergent
- 83109120** Dosing pump for rinse aid
- 83109217** Vapor extraction
- 83109002** Heating by steam injection
- 83109005** Heating by hot water coil
- 83109012** Heating by electric element - 12kw (EKW 1500)
- 83109015** Heating by electric element - 20kw
- 83109020** Heating by electric element - 30kw
- 83109150** Mobile Version (EKW 150, 2500 and 3500)
- 83108025** Adjustable belt speed by frequency control

Options / Part #:

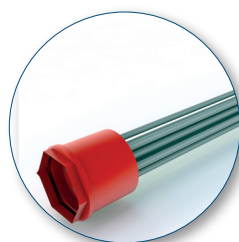
- 83101049** One man operation (EKW 1500, 2000 and 3500)
- 83108000** Input table - 1 meter
- 83108010** Output table - 1 meter
- 83108080** Rotating wedge-wire filter (EKW 5000, 6000 and 7000)
- 83108055** Enlarged height: Crates up to 400mm (EKW 2500 and 3500)
- 83108065** Enlarged height: Crates up to 400mm (EKW 5000, 6000 and 7000)
- 83107005** Upgrade from EAB-1 to EAB-2 blow off unit
- 83107205** Upgrade from EAB-2 to EAB-3 blow off unit
- 83108027** Pump to re-use water from EAB in EKW



Dosing pump for detergent
or rinse aid



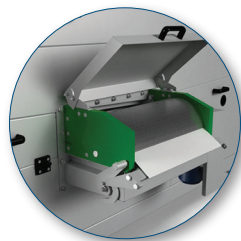
Steam injection



Electric element



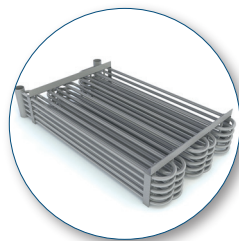
One man operation



Rotating wedge-wire filter



Vapor extraction



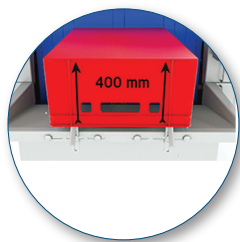
Hot water coil



Adjustable belt speed



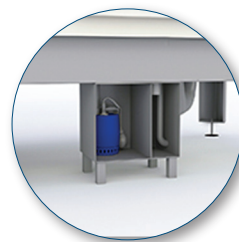
Input and output tables



Enlarged height
up to 400mm



Mobile version
(for EKW-1500, 2500 and 3500)



Pump to re-use water
from EAB in EKW