

BUGGY WASHER

This Industrial Buggy Washer is made up of solid plates and profiles of stainless steel. The cleaning tank features a slanted bottom to enable quick draining. The cabinet is easy to clean and a large door makes the inside easy to access for cleaning.

Depending on how dirty the buggy is, the maximum washing time can be adjusted up to 30 minutes. After the main wash is complete, the buggy gets rinsed with clean water to remove any remaining detergents. After being thoroughly cleaned, the buggy exits the machine through a ground level door allowing the next buggy to enter.



Machine Features

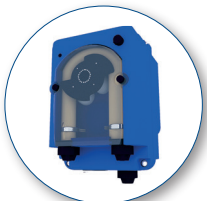
- Capacity: Maximum 20 buggy per hour
- Energy efficient
- Rinse with clean water
- Adjustable
- External filter
- Isolated wash tank

Machine Options

- Standard and custom sizes available

Part #:

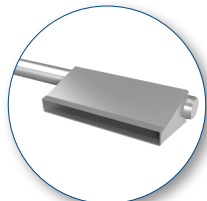
- 83103005** Buggy washer unit
- 83109110** Dosing pump for detergent
- 83109120** Dosing pump for rinse aid
- 83109217** Vapor extraction
- 83109002** Heating by steam injection
- 83109005** Heating by hot water coil
- 83109015** Heating by electric element - 20kw
- 83109020** Heating by electric element - 30kw



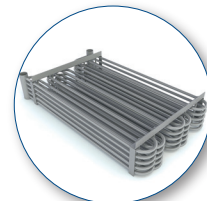
Dosing pump for
detergent or rinse aid



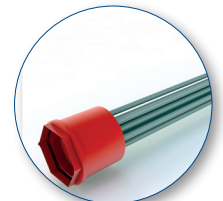
Vapor
extraction



Steam
injection



Hot water
coil



Electric
element